

### Volume [MWh]

<b>Total</b>	417022,9	4.94%	
<b>Average Daily</b>	13900,76		
<b>Max Daily</b>	18303,7		
<b>Min Daily</b>	9250,8		

### Price [€/MWh]

	Base		Peak			
<b>Avg Daily</b>	98,00	20,8%		83,20	18,9%	
<b>Max Daily</b>	159,87			149,34		
<b>Min Daily</b>	45,38			21,41		

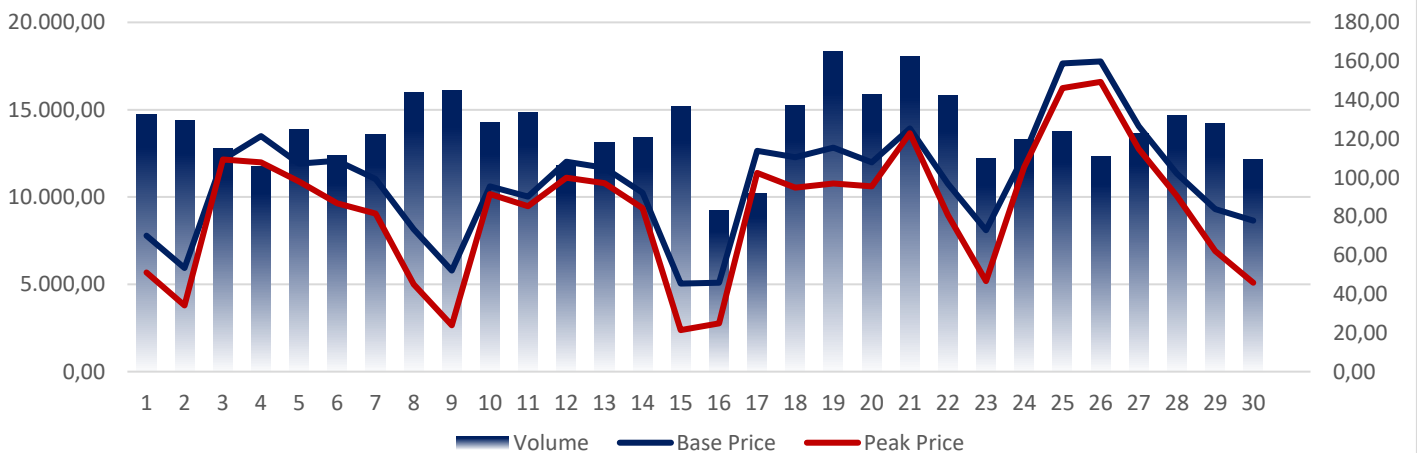
### Average Hourly Monthly Volumes [MWh]

1	2	3	4	5	6	7	8	9	10	11	12
495,22	522,97	512,63	512,85	515,8	527,3	489,12	509,75	537,75	633,15	701,63	732,44
13	14	15	16	17	18	19	20	21	22	23	24
760,49	756,78	731,51	679,87	609,9	538,19	521,96	541,93	531,17	539,71	526,07	472,46

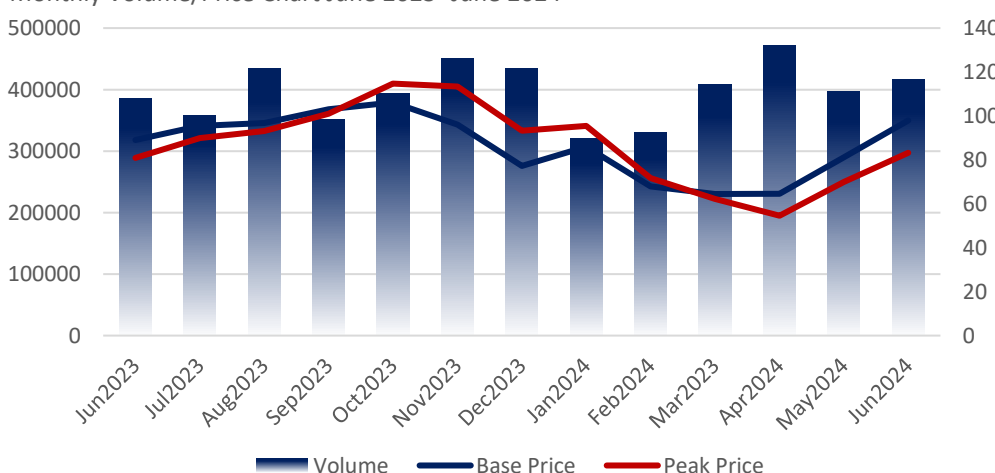
### Average Hourly Monthly Prices [€/MWh]

1	2	3	4	5	6	7	8	9	10	11	12
100,9	91,84	85,21	81,51	80,76	84,26	96,71	103,3	87,36	69,12	61,31	56,37
13	14	15	16	17	18	19	20	21	22	23	24
54,31	53,27	57,53	67,87	84,23	101,16	129,79	176,04	207,19	182,22	132,09	107,44

June 2024 - Price - Volume chart



Monthly Volume/Price Chart June 2023- June 2024



### Average in last 12 months

(July 2023 – June 2024)

<b>Volume[MWh]</b>	397347,90
<b>Base Price[€/MWh]</b>	86,41
<b>Peak Price[€/MWh]</b>	86,88